

SimplyE

SimplyE is The New York Public Library's **FREE e-reader app** that makes it easier than ever to borrow e-books. It is available on the **App Store** or **Google Play**. SimplyE makes it easy to browse, borrow, and read any eBook in your library's collection on your mobile device; no need to download multiple apps. SimplyE was created by a partnership of libraries and library consortia across the country, with The New York Public Library currently serving as lead partner. Check with your local library to find out if it offers SimplyE, or download the app now to get started reading from the SimplyE Collection.



[Watch: How to get started with SimplyE on iOS](#)



[Watch: How to get started with SimplyE on Android](#)

Device Compatibility

Apple iOS

- iPad and iPad mini 5th generation and newer, iPad Air 2 and newer, iPad Pro 3rd generation
- iPhone 6 and newer, iOS 8+
- iPod Touch 5th generation, iOS 8+

Android

- Recommended: Android 10 API 29 and above
- Minimum: Android 5.0 Lollipop (some users will still have issues if they cannot update their devices)
- Devices Tested: Google Pixel, Nexus 7, Galaxy Note

Not Compatible

- The devices and operating systems listed below will not work with the SimplyE app.
 - Any Android devices running an operating system older than Android 5.0
 - Nook HD/HD+, Nook Tablet, Nook Color
 - Kindle Fire, Kindle Paperwhite
 - Kobo e-readers

SimplyE

****If you do not have a library card, you can get one through the SimplyE App! Skip to the second on "How to Get a SimplyE Library Card" below.**

Quick Start Guide: Getting and Using the App

Installing the App & Logging In

- Search the Google Play or Apple App Store for "SimplyE." To begin using the app, open it and log in with your full library card number and PIN.

Searching & Browsing

- To browse titles: Tap Catalog at the bottom of the screen, which will display titles in various categories. Swipe from left to right to view the popular and available books in each category (tap the category titles or More... to view all books in a category). To search for a specific author or title: Tap the search icon in the upper right corner and enter the author or book name. Tap the cover of any book to read its description, or download or reserve it.

Sorting & Filtering Results

- When viewing all books in a category, you can sort by Author, Availability, or Collection. You can also sort books in the My Books and Reservations tabs.

Reading E-Books

- Once a book is downloaded, tap the Read button. Turn pages by tapping on the right or left edges of the screen. Tap the center of the screen to open the navigation bar. The table of contents can be found in the upper right corner. To exit the title, tap the back arrow (<) in the upper left corner. Tap Aa to access controls for adjusting text style and size, brightness, and contrast.

Accessing New Holds & Borrowed E-Books

- In the Reservations and My Books screens, tap the refresh icon in the upper left corner to check for available holds and books you may have checked out from another source. E-books downloaded with another app might not be available to view in SimplyE.

Returning E-Books

- All borrowed digital titles are automatically returned at the end of their lending periods, so you never have to worry about late fees (exceptions include titles in the public domain, which can stay on your SimplyE bookshelf indefinitely). To return a title early: Go to My Books, tap the title and tap Return.

SimplyE

How to Get a SimplyE Library Card

- Follow the instructions below for "How to Log In with Your Library Card." On the screen that asks you to enter your barcode and PIN, there is a link below those fields that says "Sign Up." Tap that link and follow the instructions on your screen.
*****Note: you must be within the borders of New York State when you are applying in order for the application service to work.*****

Get Help

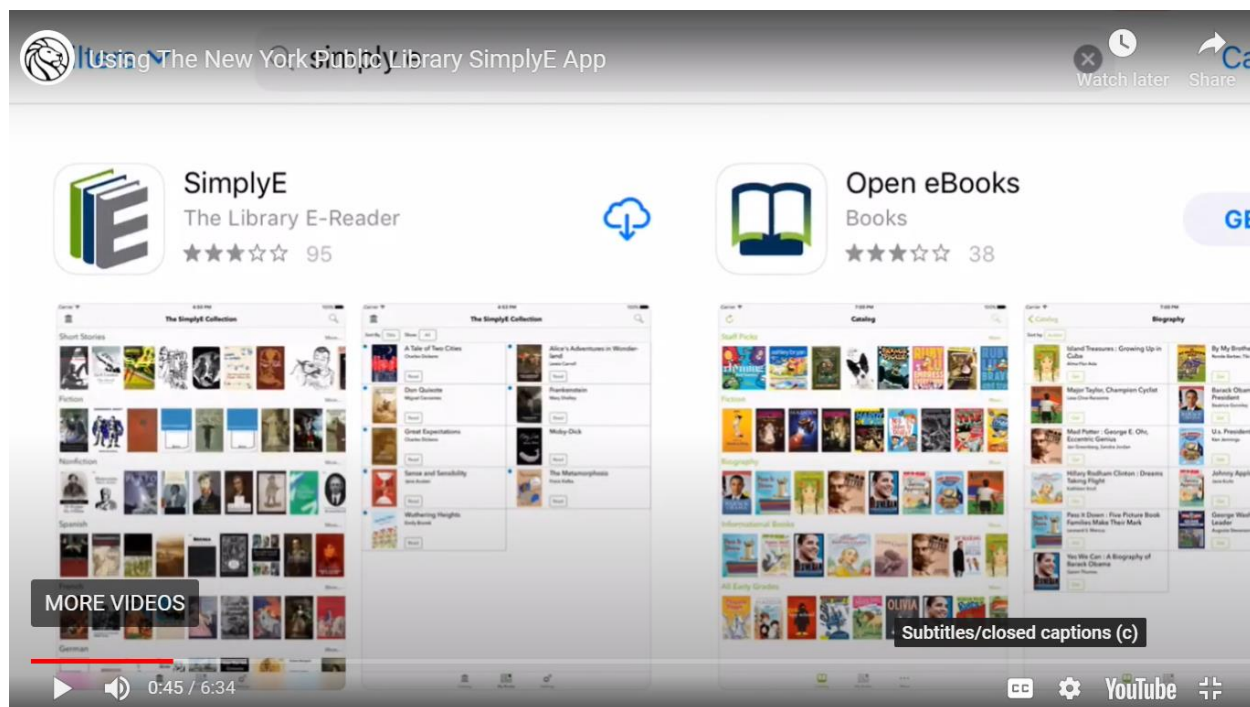
- Go to More/Help in the SimplyE app, or contact your local library.

How to Log In with Your Library Card

- Apple iOS Devices
 1. Tap the Settings tab at the bottom right of the screen
 2. Tap Accounts
 3. Select your library
 4. Tap and enter your barcode number or your username
 5. Tap the PIN field and enter your PIN
 6. Tap Catalog tab at the bottom left of the screen to start browsing and searching for e-books
- Android Devices
 1. Tap Menu on the Upper Left of the screen
 2. Tap Manage Accounts
 3. Tap Accounts
 4. Tap the relevant library you wish to log into
 5. Tap Log In
 6. Enter your library card number and pin
 7. Tap Log In
 8. Tap Accounts in the top left corner until you see Settings then tap Catalog to start browsing for e-books

If you encounter problems logging in with your library card number, please tap Report An Issue under your respective library's account screen.

SimplyE



[Using the SimplyE app video tutorial](#)